



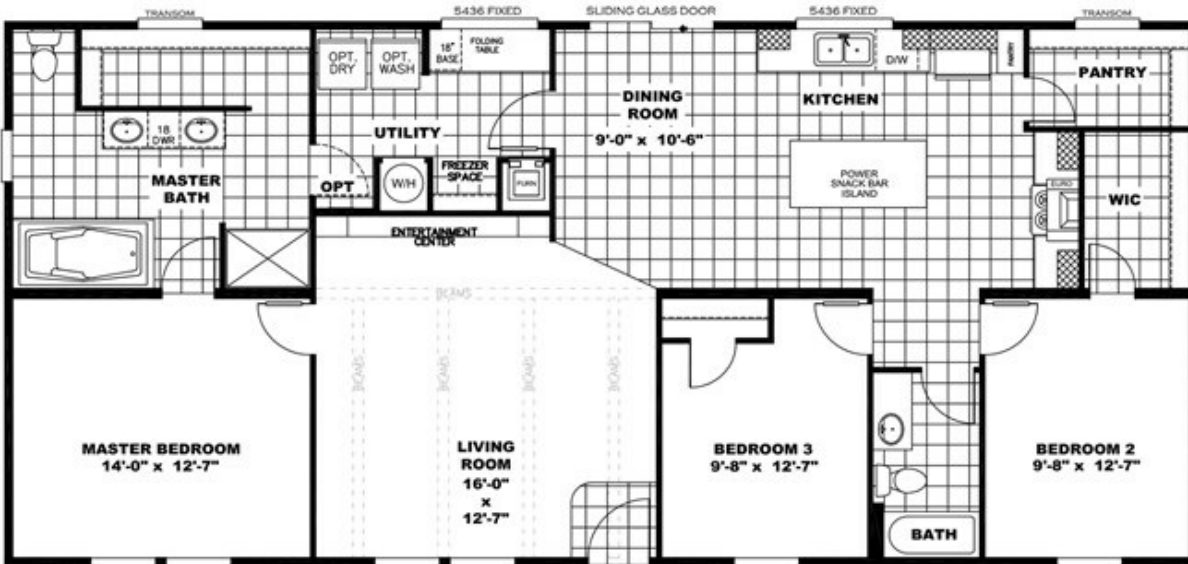
# SET UP IN THE ANNIVERSARY 2.0





**THE ANNIVERSARY 2.0** Floor plan number: CSS019683TXAB

**3 beds • 2 baths • 1568 sq.ft. • 28' width • 56' depth**



Our home building facilities invest in continuous product and process improvements. Plans, dimensions, features, materials, specifications and availability are subject to change without notice or obligation. Renderings and floor plans are representative likenesses of our homes and may differ from the actual homes. We invite you to tour a Home Center near you and inspect the highest value in quality housing available or call (936) 639-6430 to speak with a Home Consultant. Copyright 2017, CMH. All rights reserved.

## CLAYTON HOMES-LUFKIN

2101 N. MEDFORD DRIVE  
LUFKIN, TX 75901

Monday - Thursday: 9am - 6pm

Friday: 9am - 5pm

Saturday: 9am - 5pm

Sunday: Closed

(936) 639-6430